

TECO NEWS

Wheel Aligner 3D TECO920 Easy



N. 25 02/07/2026

Teco is pleased to present the new **Teco920 Easy**: simpler, smarter. The new 3D wheel aligner for cars and LCVs has been designed to make wheel alignment accessible to everyone, while maintaining the highest levels of accuracy and reliability. The major difference can be found in two key elements: the new user software and the integrated manual driven camera movement system.

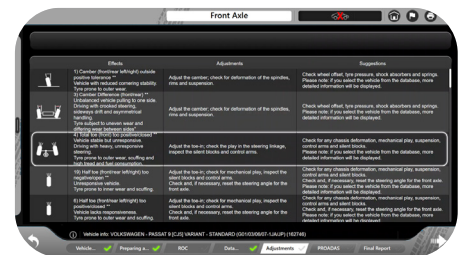
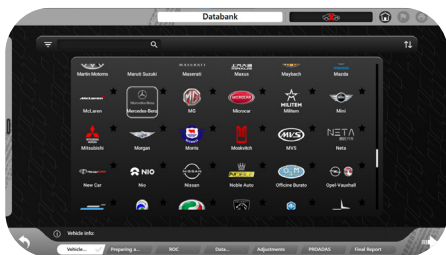
Actual innovations in the workshop

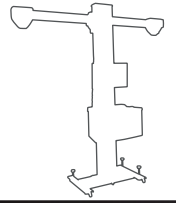
New and even more user-friendly software:

The new graphical interface has been developed for wheel alignment specialists, and it is both modern and professional in its design. It is rich in **new features**, such as the lower progress bar, the convenient vertical pop-up **selection menu**, and enhanced data visibility in the operation area.

It also features useful quick selection icons for the most common functions and simple wizards with clear instructions for less experienced operators.

Even less experienced operators can rapidly achieve the desired results, minimising operation time and the possibility of errors.





TECO NEWS

Wheel Aligner 3D TECO920 Easy



N. 25 02/07/2026

► Main features

• **Integrated movement system:** this allows camera working height to be adjusted quickly and accurately by hand. This feature enables work to be carried out from ground level up to a height of more than 2 metres, thanks to the new integrated lifting system. Safety interlocks are equipped and they can be released using the foot pedal.

No complications: everything is immediate, smooth and under control.

• **Uncompromised precision:** The high-resolution 2-camera system which utilises measurement by image difference, combined with the 4 lightweight high-resolution targets equipped with front infrared filter effectively mitigates measurement instabilities caused by reflections and sunlight. Data display up to 0.01°.

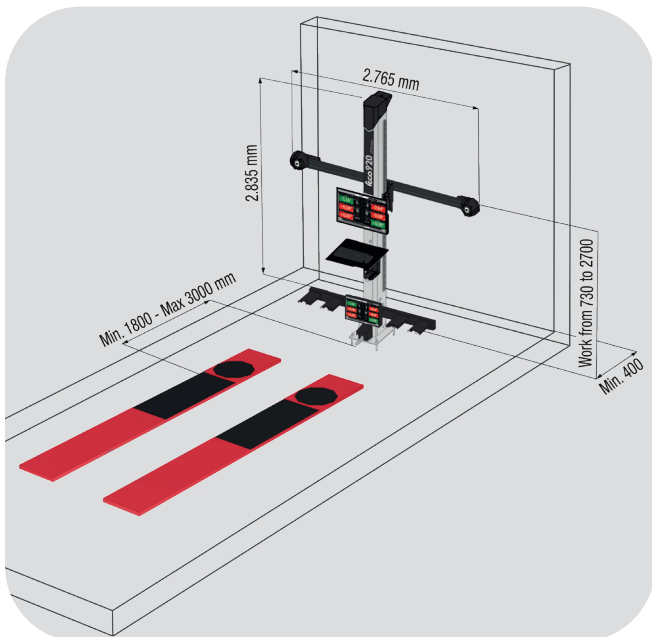
• **Ready for latest generation vehicles:** compatible with the Proadas system for calibrating ADAS systems, which are becoming increasingly required in the workshop.

• **Adjustment data always available:** the international database including over 84,000 vehicles and complete customer history management are included.

• **Factory-calibrated:** only a calibration check at installation is required.

Teco920 Easy is not merely a new wheel aligner: it is a more straightforward and intelligent working method.

► Layout



► Technical data

Total toe	± 20°
Individual toe	± 10°
Camber	± 10°
Caster	± 30°
Kingpin	± 30°
Setback	± 22°
Thrust angle	± 10°
Steering difference	± 20°

► Power supply

Power supply voltage	115/230Vac - 50/60Hz - 1 Ph
Power consumption	500 W
Camera resolution	2592 × 1944 12,000,000 Pixel

For product codes and a complete list of available accessories, please refer to the catalogue